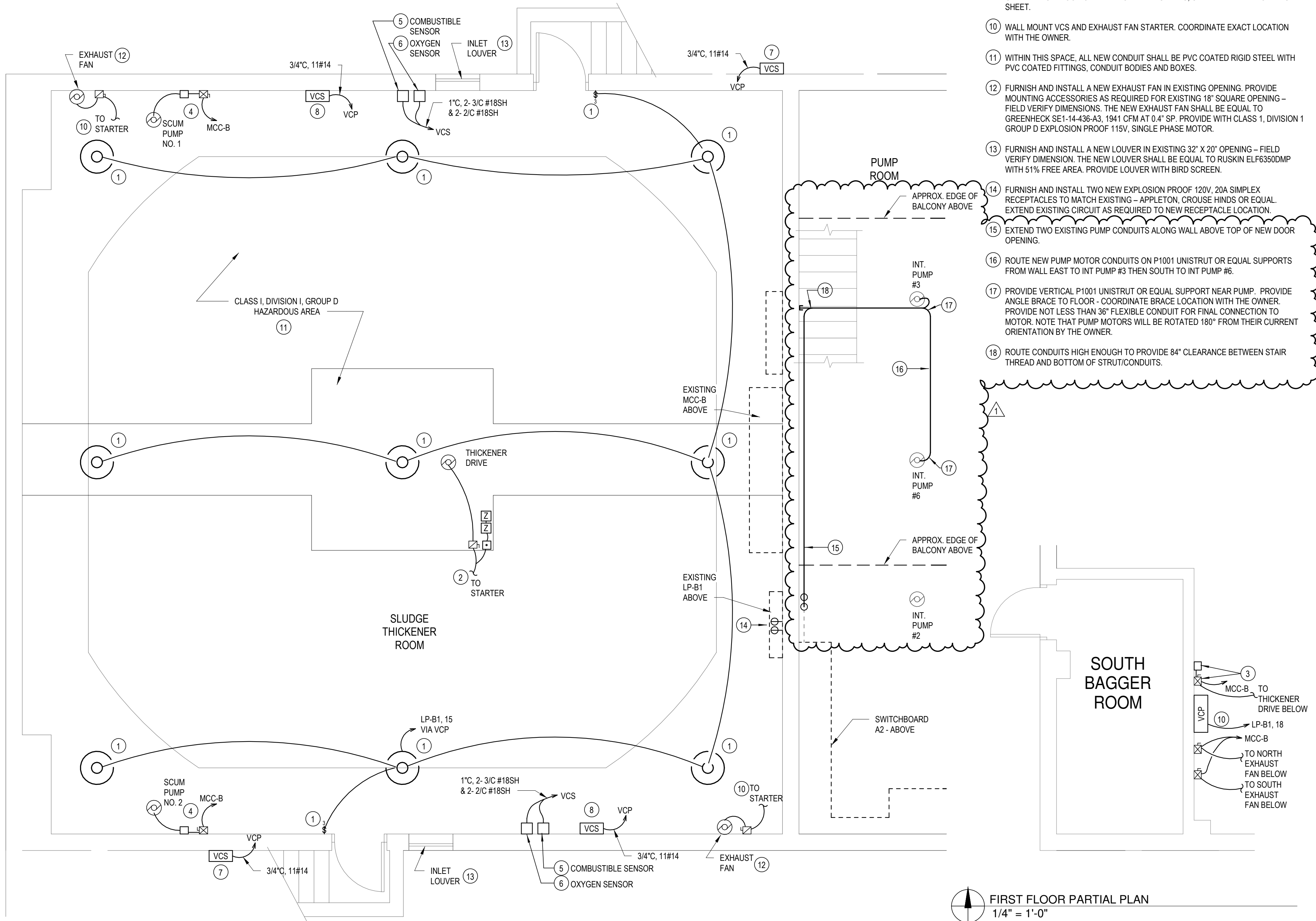


MOTOR CONTROL CENTER - (E)MCC-B						
LOCATION: SL THICK BLDG			VOLTS: 277/480V WYE		AIC RATING: 42KAIC	
SOURCE: MAIN SWITCHBOARD			PHASES: 3		MAINS RATING: 600A MAIN BUS	
MOUNTING: SURFACE			WIRES: 4		MAINS TYPE: 400A MAIN CB	
ENCLOSURE: NEMA 1						
NOTES: EXISTING GENERAL ELECTRIC 7700 LINE CONTROL CENTER						
CCT NO	CIRCUIT DESCRIPTION	CCT BKR	STARTER	LOAD (HP/KVA)	LOAD (AMP)	REMARKS
1	LP-B1 VIA 37.5 KVA TRANSF	80A		37.5	78.0	
2	BLOWER NO. 1	70A		30	40.0	
3	BLOWER NO. 2	70A		30	40.0	
4	AIR COMPRESSORS	150A		80	80.0	TWO @ 40HP EA
5	SPARE	15A	SIZE 1			
6	SPARE	15A	SIZE 1			
7	SPARE	15A	SIZE 1			
8	WATER HEATER	15A		12	14.4	
9	BRIDGE CRANE	30A		5	7.6	
10	SPARE	15A	SIZE 1			
11	SPARE	15A	SIZE 1			
12	HV-3 - CHEM BLDG	15A		2	3.4	
13	SL RECIRC PUMP NO. 1	30A	SIZE 2	20	27.0	
14	SL RECIRC PUMP NO. 2	30A	SIZE 2	20	27.0	
15	WELDING RECEIPT	60A		0	0.0	
16	SPARE	60A				
17	SLUDGE THICKENER DRIVE	15A		1.5	3.0	INSTALL NEW CIRCUIT BREAKER
18	SCUM PUMP NO. 1	15A		2	3.4	INSTALL NEW CIRCUIT BREAKER
19	SCUM PUMP NO. 2	15A		2	3.4	INSTALL NEW CIRCUIT BREAKER
20	N FLEX RAKE WASH/COMP	15A	SIZE 1	1.5	3.0	
21	S FLEX RAKE WASH/COMP	15A	SIZE 1	1.5	3.0	
22	THICKENER ROOM EXH FANS	15A		2 @ 0.5	2.2	INSTALL NEW CIRCUIT BREAKER
23	SPARE	15A	SIZE 1			
24	SPARE	15A	SIZE 1			
25	SPARE	15A	SIZE 1			
26	SPARE	15A	SIZE 1			
27	SPARE	15A	SIZE 1			
28	SPARE	100A				
29	SPARE	100A				
TOTAL CONNECTED CURRENT:					335.4	AMPS



SLUDGE THICKENING BUILDING ELECTRICAL PLAN
1/4" = 1'-0"

FIRST FLOOR PARTIAL PLAN
1/4" = 1'-0"

GENERAL NOTES

1. EXISTING CONDUITS MAY BE REUSED WHERE IN GOOD CONDITION.

KEY NOTES

- FURNISH AND INSTALL NEW LIGHTING FIXTURES AT SAME LOCATION AS EXISTING. NEW FIXTURES SHALL BE EQUAL TO APPLETON CMLED-A (OR C)-15-2-G-5-BU, 120V, 64W, 4838 LUMEN OUTPUT. CEILING OR PENDANT MOUNT. TYPICAL OF NINE.
- TO THICKENER DRIVE MOTOR STARTER LOCATED ON EXTERIOR WALL. SEE ONLINE DIAGRAM ON SHEET E-501.
- THICKENER DRIVE MOTOR STARTER AND ALARM ENCLOSURE. COORDINATE EXACT LOCATION WITH THE OWNER. SEE ONLINE DIAGRAM AND DETAILS ON SHEET E-501.
- FURNISH AND INSTALL NEW SCUM PUMP STARTER AND RECEPTACLE AT SAME LOCATION AS EXISTING MOTOR STARTER. SEE ONLINE DIAGRAM AND DETAILS ON SHEET E-501 FOR ADDITIONAL INFORMATION.
- MOUNT COMBUSTIBLE GAS SENSOR 2 FEET BELOW CEILING.
- MOUNT OXYGEN SENSOR 4 FEET ABOVE WALKWAY.
- WALL MOUNT VCS AT HEAD OF STAIRS, 48" ABOVE GRADE. ROUTE CONDUIT AND CONDUCTORS TO VCP LOCATED ON THE FIRST FLOOR OF THE THICKENER BUILDING. SEE PARTIAL PLAN ON THIS SHEET.
- WALL MOUNT VCS 48" ABOVE WALKWAY. ROUTE CONDUIT AND CONDUCTORS TO VCP LOCATED ON THE FIRST FLOOR OF THE THICKENER BUILDING. SEE PARTIAL PLAN ON THIS SHEET.
- ROUTE CONDUIT AND CONDUCTORS TO EXHAUST FAN MOTOR STARTER LOCATED ON THE FIRST FLOOR OF THE THICKENER BUILDING. SEE PARTIAL PLAN ON THIS SHEET.
- WALL MOUNT VCS AND EXHAUST FAN STARTER. COORDINATE EXACT LOCATION WITH THE OWNER.
- WITHIN THIS SPACE, ALL NEW CONDUIT SHALL BE PVC COATED RIGID STEEL WITH PVC COATED FITTINGS, CONDUIT BODIES AND BOXES.
- FURNISH AND INSTALL A NEW EXHAUST FAN IN EXISTING OPENING. PROVIDE MOUNTING ACCESSORIES AS REQUIRED FOR EXISTING 18" SQUARE OPENING - FIELD VERIFY DIMENSIONS. THE NEW EXHAUST FAN SHALL BE EQUAL TO GREENHECK SE1-14-436-A3, 1941 CFM AT 0.4" SP. PROVIDE WITH CLASS 1, DIVISION 1 GROUP D EXPLOSION PROOF 115V, SINGLE PHASE MOTOR.
- FURNISH AND INSTALL A NEW LOUVER IN EXISTING 32" X 20" OPENING - FIELD VERIFY DIMENSION. THE NEW LOUVER SHALL BE EQUAL TO RUSKIN ELF6350DMP WITH 51% FREE AREA. PROVIDE LOUVER WITH BIRD SCREEN.
- FURNISH AND INSTALL TWO NEW EXPLOSION PROOF 120V, 20A SIMPLEX RECEPTACLES TO MATCH EXISTING - APPLETON, CROUSE HINDS OR EQUAL. EXTEND EXISTING CIRCUIT AS REQUIRED TO NEW RECEPTACLE LOCATION.
- EXTEND TWO EXISTING PUMP CONDUITS ALONG WALL ABOVE TOP OF NEW DOOR OPENING.
- ROUTE NEW PUMP MOTOR CONDUITS ON P1001 UNISTRUT OR EQUAL SUPPORTS FROM WALL EAST TO INT. PUMP #3 THEN SOUTH TO INT. PUMP #6.
- PROVIDE VERTICAL P1001 UNISTRUT OR EQUAL SUPPORT NEAR PUMP. PROVIDE ANGLE BRACE TO FLOOR - COORDINATE BRACE LOCATION WITH THE OWNER. PROVIDE NOT LESS THAN 36" FLEXIBLE CONDUIT FOR FINAL CONNECTION TO MOTOR. NOTE THAT PUMP MOTORS WILL BE ROTATED 180° FROM THEIR CURRENT ORIENTATION BY THE OWNER.
- ROUTE CONDUITS HIGH ENOUGH TO PROVIDE 84" CLEARANCE BETWEEN STAIR THREAD AND BOTTOM OF STRUT/CONDUITS.

REVISIONS		
REV	DESCRIPTION	DATE
1	ADDENDUM #1	05/03/2018

Copyright ©
NOT TO BE REPRODUCED OR DISTRIBUTED
WITHOUT WRITTEN PERMISSION FROM
C2OE. ALL RIGHTS RESERVED.

SCALE: As indicated

PROJ. # 17-0117

DATE: 04/06/2018

SHEET